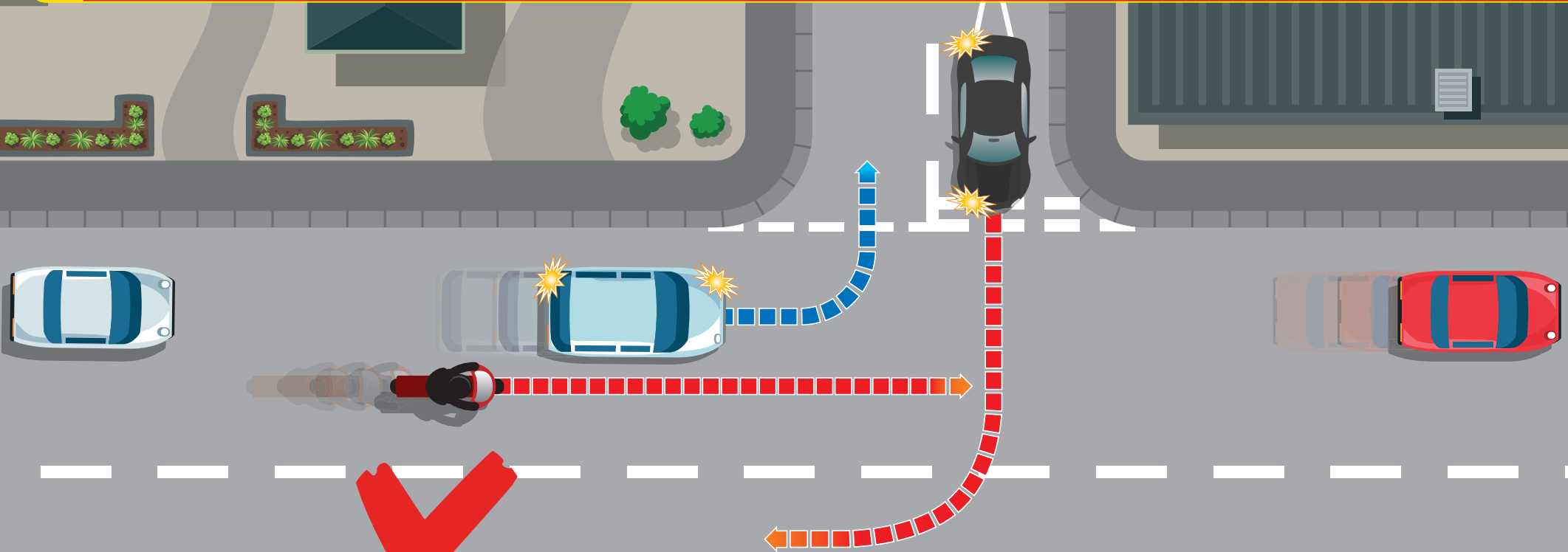




OVERTAKING

turning traffic - driver may pull out from the junction in front of the turning vehicle



Never overtake on the approach to junctions

- Left turning traffic will often tempt a waiting driver to pull out from a junction or driveway
- The turning vehicle can often block the view of the driver who is waiting to pull out of the junction
- Riders should be extremely careful when overtaking or following turning traffic. Slow down and adjust your road position to ensure you can see and be seen.