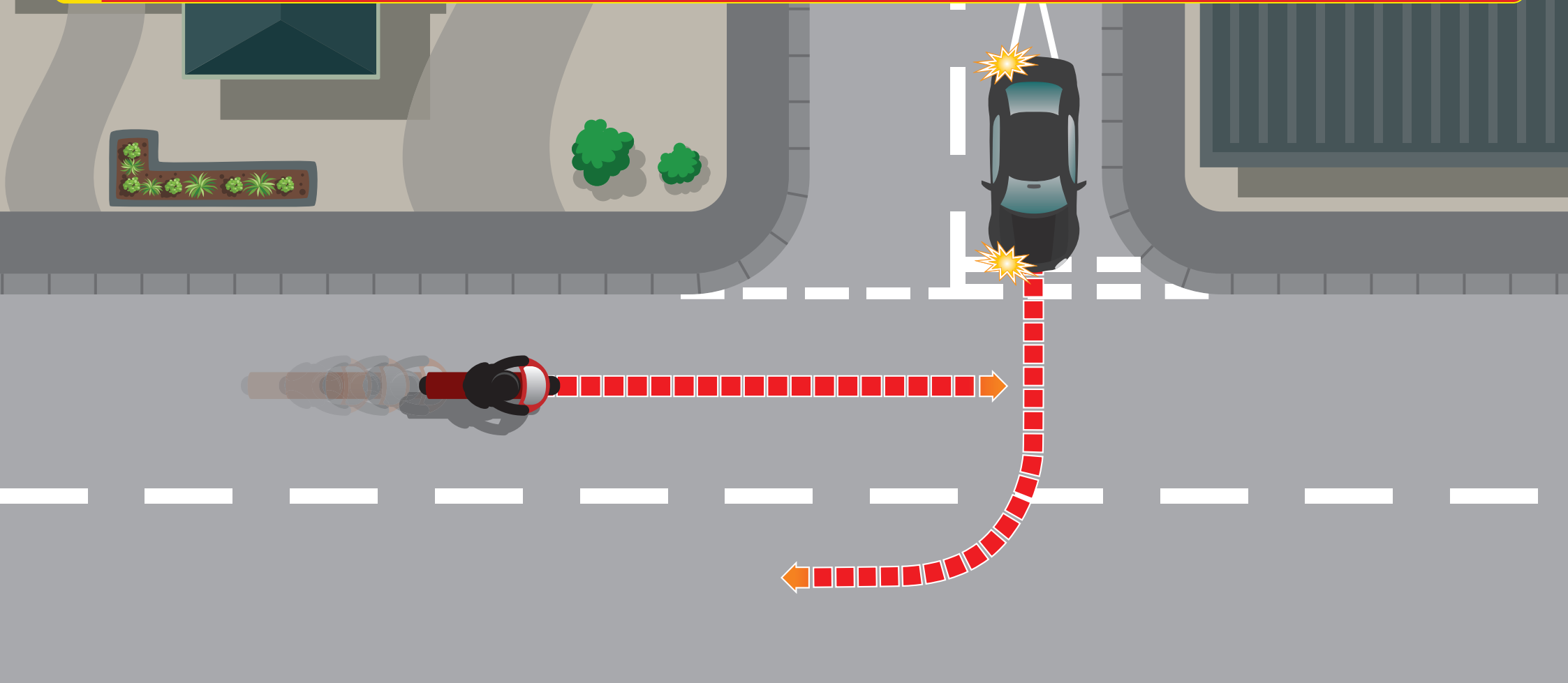




SMIDSY

“Sorry Mate I Didn’t See You!”
The driver looks but fails to see the two-wheeler



- Even on clear roads some drivers fail to see riders approaching and will turn or pull out in front of them

- Be more visible. Dipped headlights and bright/reflective clothing will help to make you stand out

- If you think the driver has not seen you be ready to take avoiding action.