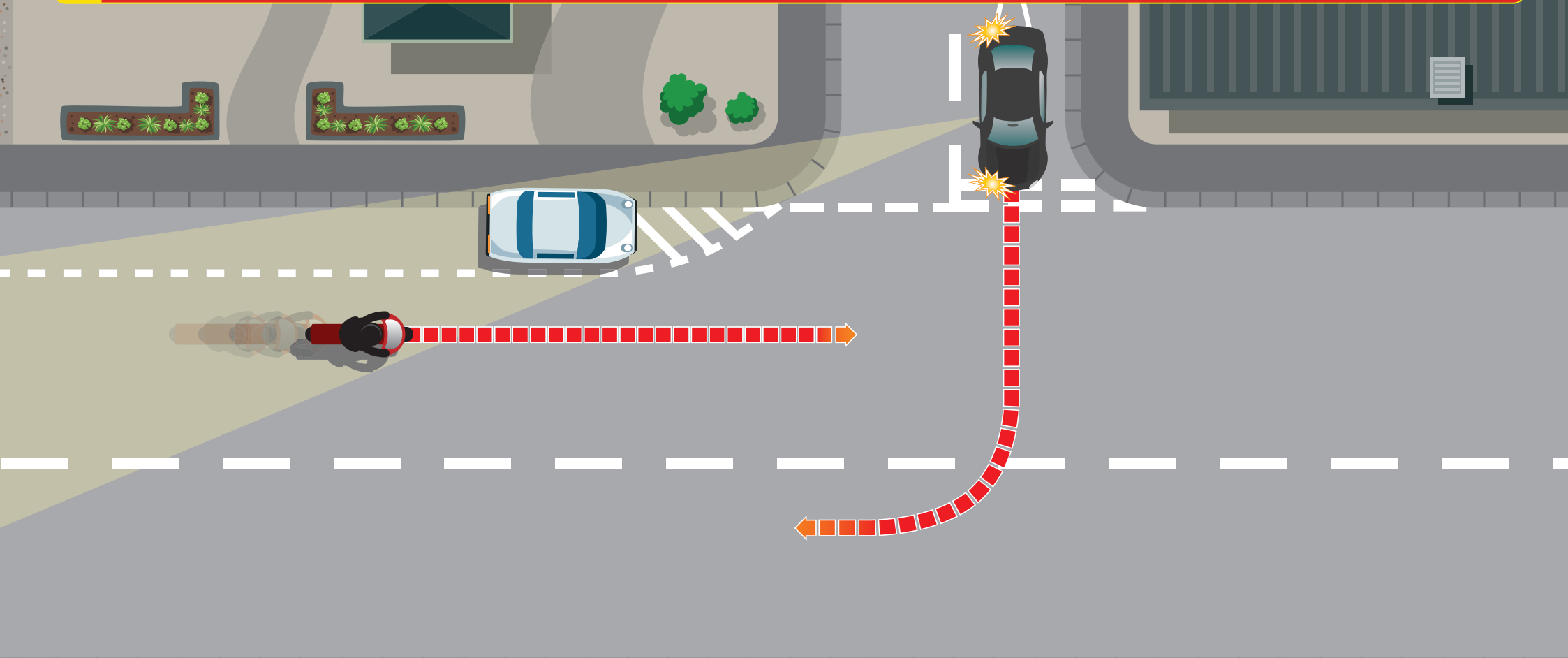




PARKED VEHICLES

vehicles parked near a junction are a dangerous obstruction for riders.



- Vehicles parked near junctions make it difficult for a driver pulling out to see riders approaching. They may not see a rider in time to stop
- Riders should pass parked cars with care. Try to make sure the driver can see you
- Adjust your speed and position on the road to see and be seen.