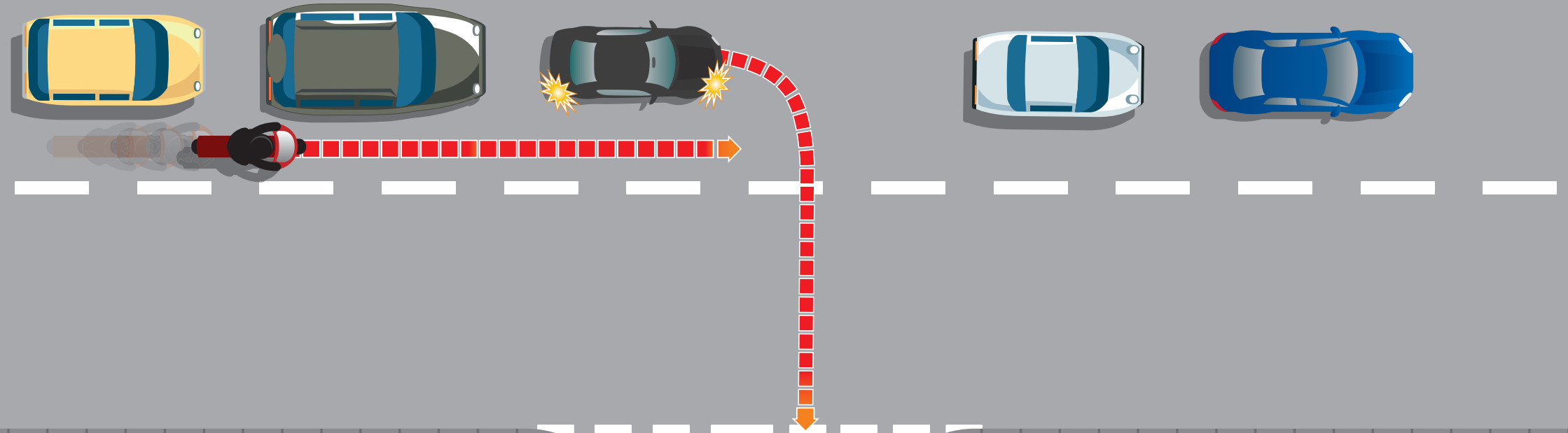


two



FILTERING

vehicles turning out of queuing traffic



- Drivers waiting in queuing traffic often lose patience and u-turn out of the queue without warning
- Drivers indicating a right turn into a side road may be hidden by other vehicles

- Filter with care, reduce your speed and make sure you can be seen. Use dipped headlights and bright/reflective clothing.
- Golden rule: Never filter at more than 10mph faster than slow/stationary traffic.